

Rindean Quarries Pty Ltd

Air Quality and Meteorological Monitoring Monthly Summary

February 2026

SITE INFORMATION	
EPL Number:	20548
EPA Website Link:	ViewPOEOLicence.aspx (nsw.gov.au)
Licensee:	Rindean Quarries Pty Ltd
Premises:	620 Wisemans Ferry Road, SOMERSBY NSW 2250
EPL Monitoring Points:	Points 8, 9 and 10
Sampling Period:	February 2026
Obtained Date:	12/03/2026
Publication Date:	12/03/2026

1. Continuous PM₁₀ (EPL ID #9 and #10)

Table 1: Continuous PM₁₀ Monitoring Results (24hr Averages) – February 2026

DATE	PM ₁₀ 24hr Average (µg/m ³)	
	EPA ID# 9 (Zone 1)	EPA ID# 10 (Zone 2)
1/02/2026	29.3	30.9
2/02/2026	13.2	14.2
3/02/2026	8.1	7.4
4/02/2026	18.4	21.7
5/02/2026	21.5	26.0
6/02/2026	20.4	23.9
7/02/2026	15.2	15.6
8/02/2026	14.0	15.0
9/02/2026	11.8	12.0
10/02/2026	13.3	15.4
11/02/2026	15.5	20.8
12/02/2026	17.2	20.6
13/02/2026	11.7	12.6
14/02/2026	7.1	7.1
15/02/2026	6.9	6.5
16/02/2026	4.1	5.3
17/02/2026	8.8	16.7
18/02/2026	15.2	24.7
19/02/2026	21.1	25.0
20/02/2026	16.9	17.8
21/02/2026	12.1	11.7
22/02/2026	11.3	10.9
23/02/2026	15.0	23.3
24/02/2026	18.1	22.5
25/02/2026	12.6	16.6
26/02/2026	6.5	7.2
27/02/2026	5.0	4.0
28/02/2026	10.7	12.1

Note: Validated data. Blank cells in table indicate insufficient valid data to provide a 24hr average PM₁₀ result.

Figure 1: Continuous 24hr Averages – February 2026

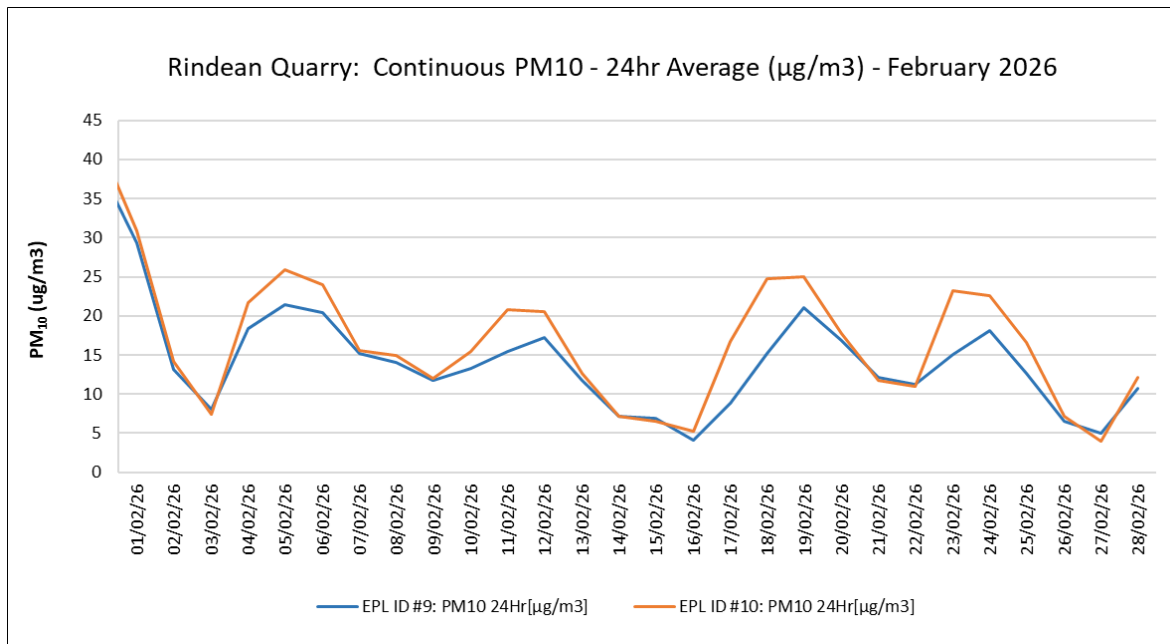


Table 2: PM₁₀ 24hr Average Monthly Summary Results – February 2026

EPL 20548 Sampling Point	Location ID	Pollutant	Unit	Monitoring Frequency Required by Licence	No. of times measured during month	Min Value (µg/m ³)	Mean Value (µg/m ³)	Max Value (µg/m ³)
9	Zone 1	PM ₁₀	µg/m ³	Continuous	Continuous	4.1	13.6	29.3
10	Zone 2	PM ₁₀	µg/m ³	Continuous	Continuous	4.0	16.0	30.9

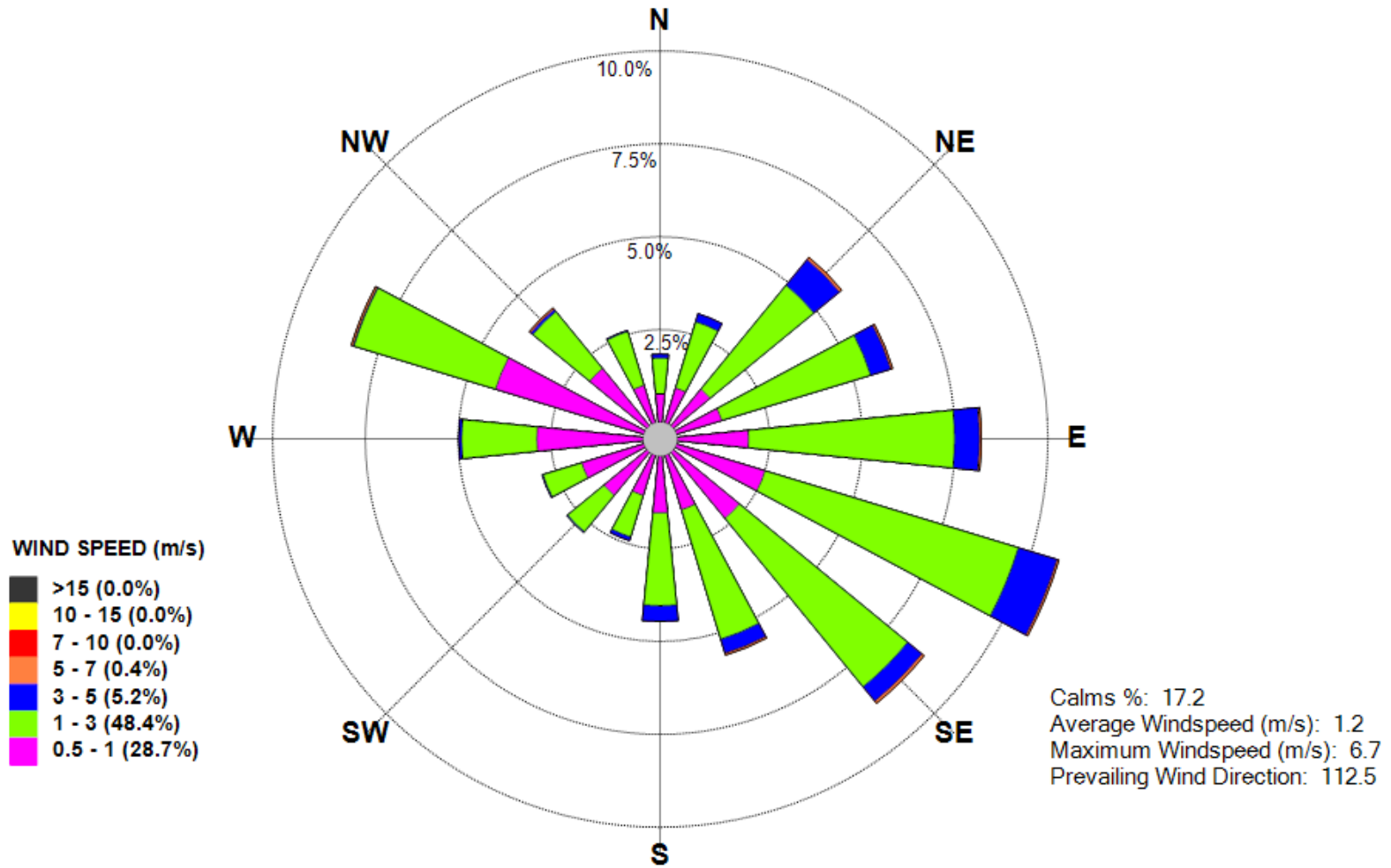
2. Meteorological (EPL ID #8)

Table 3: Monthly Meteorological Data Summary – February 2026

Date	Temp 2m Min	Temp 2m Ave	Temp 2m Max	10m Temp Min	10m Temp Ave	10m Temp Max	Humidity Min	Humidity Ave	Humidity Max	Wind Speed Min	Wind Speed Ave	Wind Speed Max	Rain (mm)	Solar Rad Min	Solar Rad Ave	Solar Rad Max	Delta Temp Min	Delta Temp Ave	Delta Temp Max	Sigma Theta Min	Sigma Theta Ave	Sigma Theta Max	
1/02/2026	18.1	22.7	29.9	17.9	22.6	29.5	55.5	95.2	99.9	0.1	1.4	4.4	4.4	0.0	118.2	758.0	-1.3	0.1	2.5	10.5	39.7	90.4	
2/02/2026	14.3	17.2	20.1	14.3	16.9	18.7	50.8	69.9	99.9	0.3	1.9	6.7	2.4	0.0	133.4	782.9	-0.7	0.3	1.7	24.2	43.8	66.9	
3/02/2026	14.5	17.7	22.2	14.4	17.4	21.1	57.2	88.8	100.0	0.2	1.4	3.6	1.8	0.0	142.6	1079.8	-0.4	0.3	1.6	15.0	35.8	78.2	
4/02/2026	16.2	21.3	27.3	16.5	20.9	25.9	48.4	74.6	99.9	0.1	1.7	4.8	0.0	0.0	260.3	1015.1	-0.9	0.3	1.9	10.8	39.3	97.2	
5/02/2026	18.0	25.9	36.7	18.6	25.9	35.8	17.3	65.2	100.0	0.2	1.3	4.2	0.0	0.0	266.2	1031.6	-2.9	0.1	2.0	4.3	34.5	85.8	
6/02/2026	19.4	23.5	30.8	19.6	23.4	29.3	30.2	77.9	100.0	0.1	1.3	4.3	1.8	0.0	217.3	993.3	-2.5	0.1	2.2	22.5	47.7	91.5	
7/02/2026	20.2	25.5	32.5	20.7	25.4	31.6	37.9	57.4	75.4	0.0	1.1	5.0	0.0	0.0	257.7	1005.2	-1.6	0.0	2.0	8.6	41.2	89.1	
8/02/2026	20.1	21.4	23.5	19.9	21.4	24.5	50.1	96.5	99.9	0.1	1.1	4.1	1.4	0.0	33.6	230.8	-1.1	0.0	0.4	17.2	45.9	94.2	
9/02/2026	19.4	21.8	27.3	19.6	21.9	26.9	62.0	93.9	99.9	0.1	0.9	5.4	13.0	0.0	84.1	831.2	-1.0	-0.1	1.2	4.8	50.8	96.4	
10/02/2026	19.5	22.7	28.0	19.8	22.5	26.9	63.8	92.2	100.0	0.0	1.0	3.0	0.0	0.0	173.2	1134.3	-0.8	0.2	1.9	12.7	50.1	103.8	
11/02/2026	18.1	25.5	34.8	18.3	25.3	33.8	29.5	74.6	100.0	0.1	1.5	4.5	0.0	0.0	258.5	1008.1	-1.3	0.2	1.8	5.8	38.3	89.2	
12/02/2026	15.2	21.9	27.2	15.1	22.0	28.4	34.3	79.4	100.0	0.1	1.5	5.9	4.0	0.0	87.1	529.2	-2.5	-0.1	1.5	23.5	43.1	77.9	
13/02/2026	15.4	17.4	20.3	15.3	17.3	19.8	64.7	91.3	100.0	0.1	0.9	3.1	0.2	0.0	56.8	310.4	-0.6	0.1	0.8	8.9	38.3	87.2	
14/02/2026	16.1	18.4	22.5	16.1	18.3	21.5	53.6	85.2	99.9	0.1	1.2	4.4	4.6	0.0	108.9	529.8	-0.9	0.1	1.5	6.8	31.3	96.1	
15/02/2026	16.2	18.4	22.9	16.3	18.2	21.7	68.0	97.1	100.0	0.1	1.0	3.5	6.6	0.0	127.6	874.3	-0.5	0.2	1.6	5.4	34.9	97.2	
16/02/2026	16.2	18.8	23.8	16.2	18.5	23.0	54.5	93.4	100.0	0.1	1.2	5.9	8.8	0.0	132.0	770.0	-0.6	0.2	1.6	5.5	36.7	95.8	
17/02/2026	15.3	20.8	26.3	15.9	20.6	25.2	49.5	81.6	100.0	0.1	1.9	6.4	0.0	0.0	261.3	990.6	-1.4	0.1	1.8	4.0	29.9	87.4	
18/02/2026	18.5	24.5	35.2	19.1	24.6	34.4	29.7	68.3	100.0	0.3	1.4	5.4	4.0	0.0	239.0	1000.9	-2.2	-0.1	3.0	11.7	46.9	93.0	
19/02/2026	19.8	22.2	27.6	19.9	21.9	26.1	91.2	99.4	100.0	0.1	1.3	4.0	1.6	0.0	131.2	1155.4	-0.3	0.3	2.1	18.0	35.6	73.7	
20/02/2026	20.2	21.9	24.5	20.3	21.8	23.7	90.6	99.0	100.0	0.1	1.5	3.9	0.2	0.0	89.1	597.7	-0.3	0.1	1.5	16.9	31.7	93.7	
21/02/2026	20.1	24.9	33.0	20.5	24.7	32.3	41.7	80.3	100.0	0.0	1.2	4.5	1.0	0.0	224.2	946.5	-1.2	0.2	1.5	5.6	43.9	101.2	
22/02/2026	19.9	25.3	33.0	20.3	25.1	32.0	39.9	77.6	99.9	0.1	1.3	4.1	0.2	0.0	236.8	961.8	-1.1	0.2	1.6	8.2	38.0	91.5	
23/02/2026	21.4	24.2	29.9	21.4	24.0	29.5	54.0	90.7	100.0	0.1	1.1	4.5	0.0	0.0	130.8	668.7	-1.3	0.2	1.9	8.2	30.7	70.6	
24/02/2026	20.5	23.6	28.8	20.5	23.2	27.8	56.2	87.5	100.0	0.1	1.6	6.6	0.0	0.0	221.0	957.0	-0.2	0.4	1.9	20.5	38.9	86.5	
25/02/2026	18.5	23.0	30.2	19.1	22.7	29.4	54.6	91.0	99.9	0.0	1.2	4.6	1.2	0.0	195.7	953.9	-1.5	0.3	1.8	15.3	43.8	92.7	
26/02/2026	18.8	21.7	26.6	18.7	21.3	25.5	68.8	94.9	100.0	0.1	1.2	3.8	13.0	0.0	141.9	835.1	0.0	0.3	1.8	11.6	42.3	90.6	
27/02/2026	18.4	19.5	20.6	18.4	19.5	20.4	99.7	99.7	99.7	0.1	1.5	5.1	81.8	0.0	24.0	189.2	-0.4	0.0	0.6	8.2	27.5	96.2	
28/02/2026	17.3	20.4	24.2	18.0	20.5	23.3	61.9	89.7	100.0	0.0	1.3	4.6	0.4	0.0	148.5	864.6	-1.3	-0.1	1.5	8.8	26.6	68.1	
Monthly	14.3	21.9	36.7	14.3	21.7	35.8	17	85.4	100	0.0	1.3	6.7	152.4	0.0	160.7	1155.4	-2.9	0.1	3.0	4.00	38.8	103.80	

Figure 2: Windrose – February 2026

Rindean Quarry - Windrose February 2026



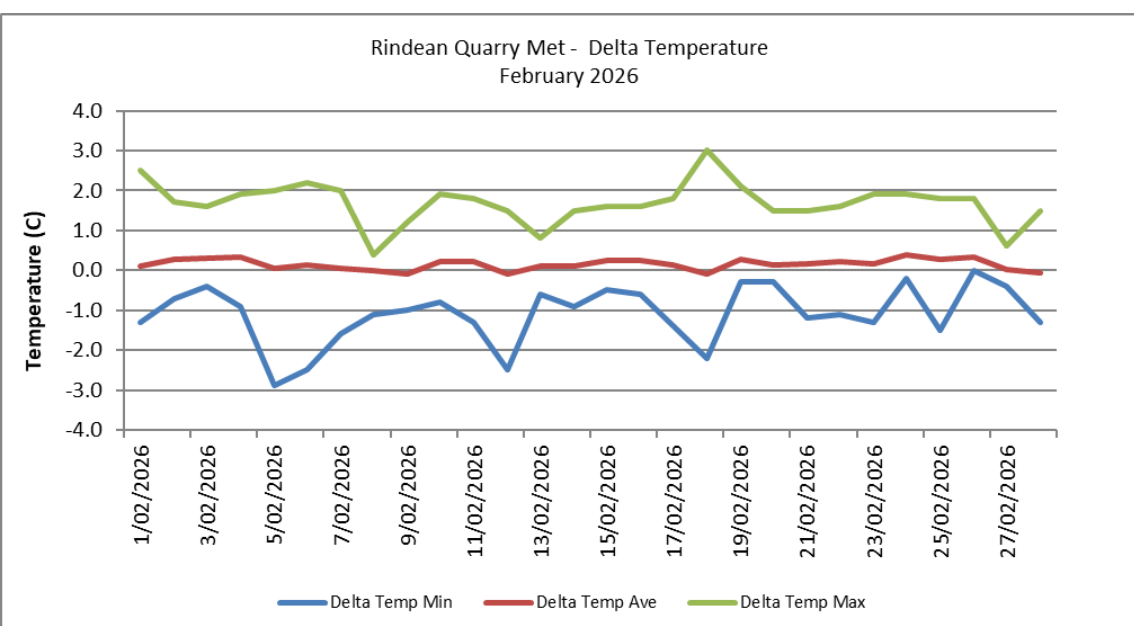
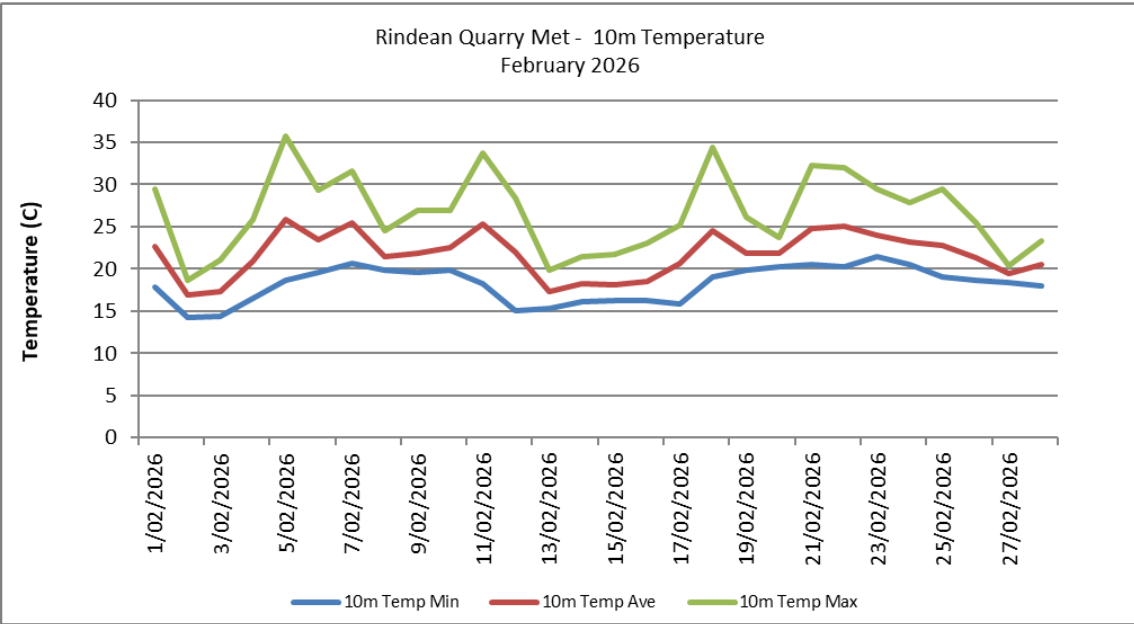
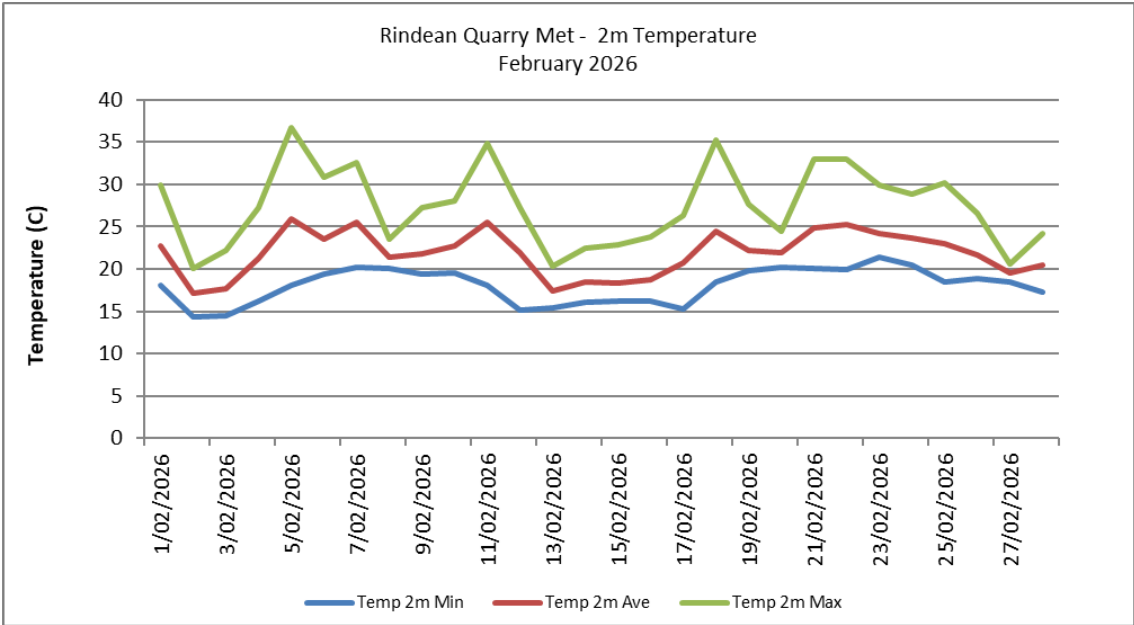


Figure 3-5: Daily (minimum, average, maximum) 2m & 10m Temperature and Delta Temperature

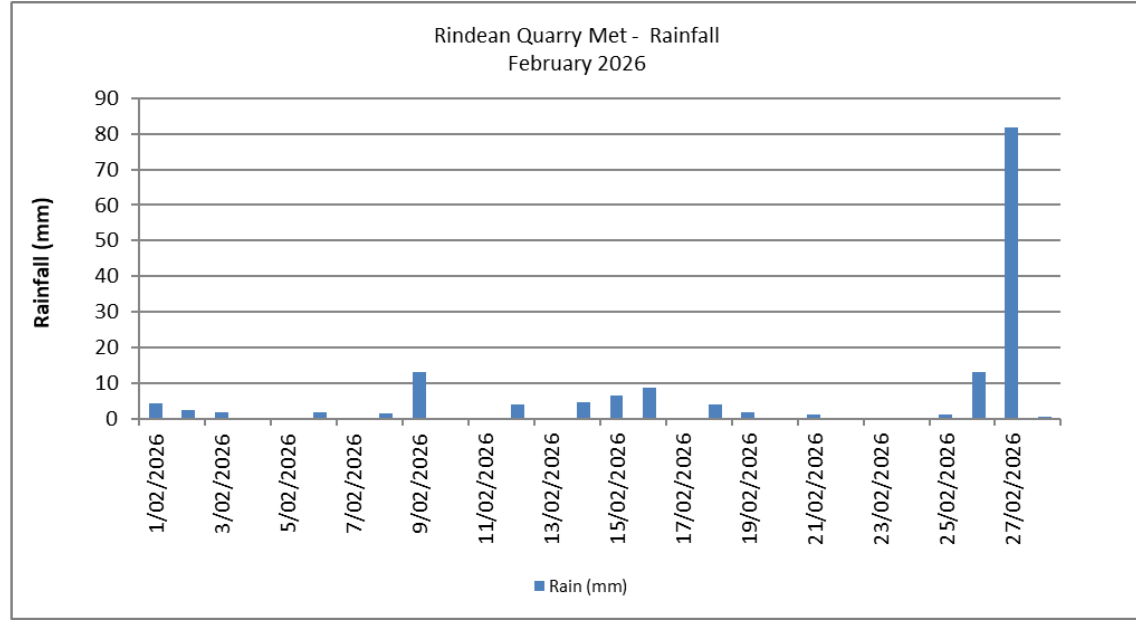
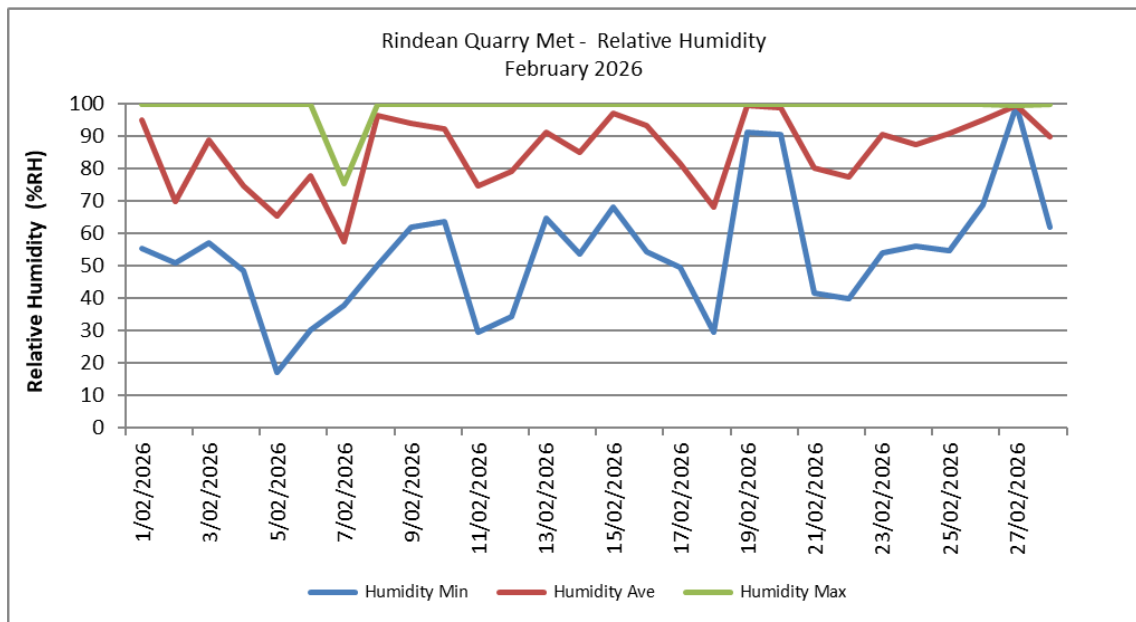
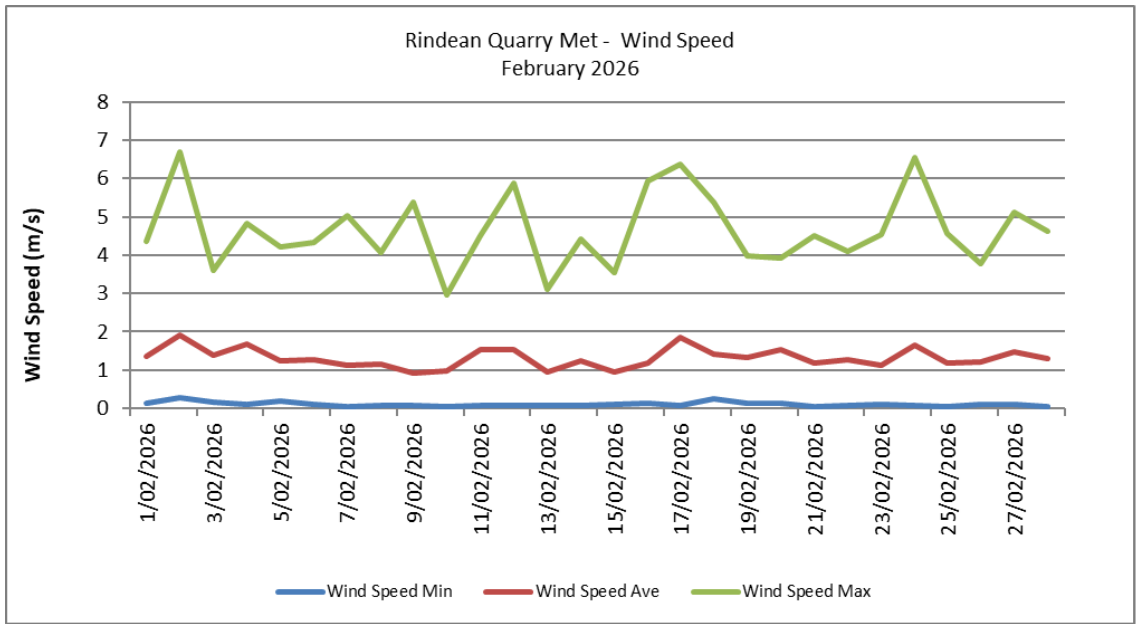


Figure 6-8: Daily (minimum, average, maximum) Wind Speed & Humidity and Rainfall

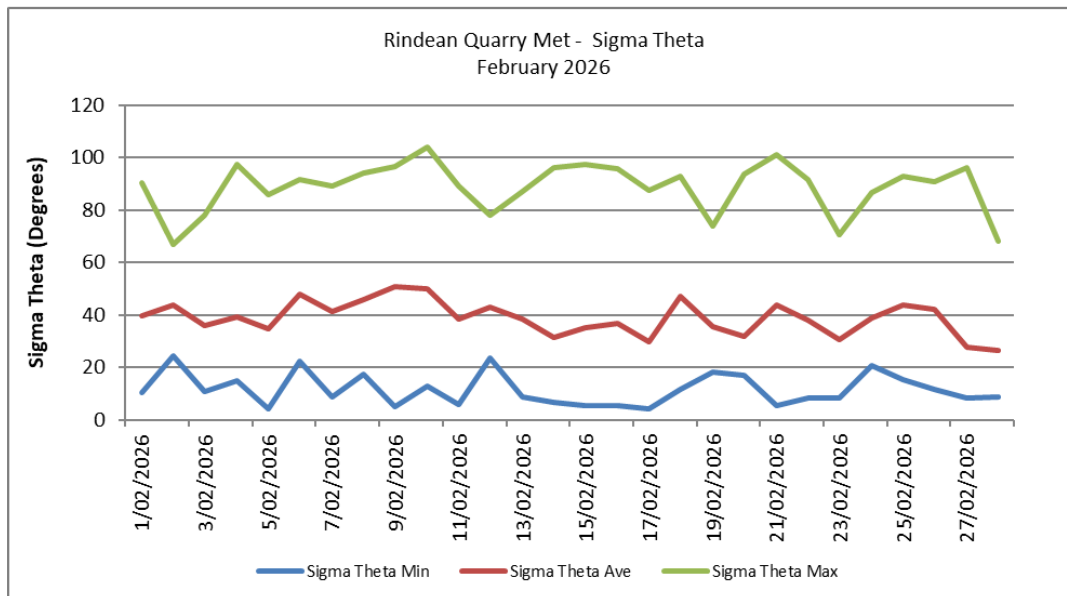
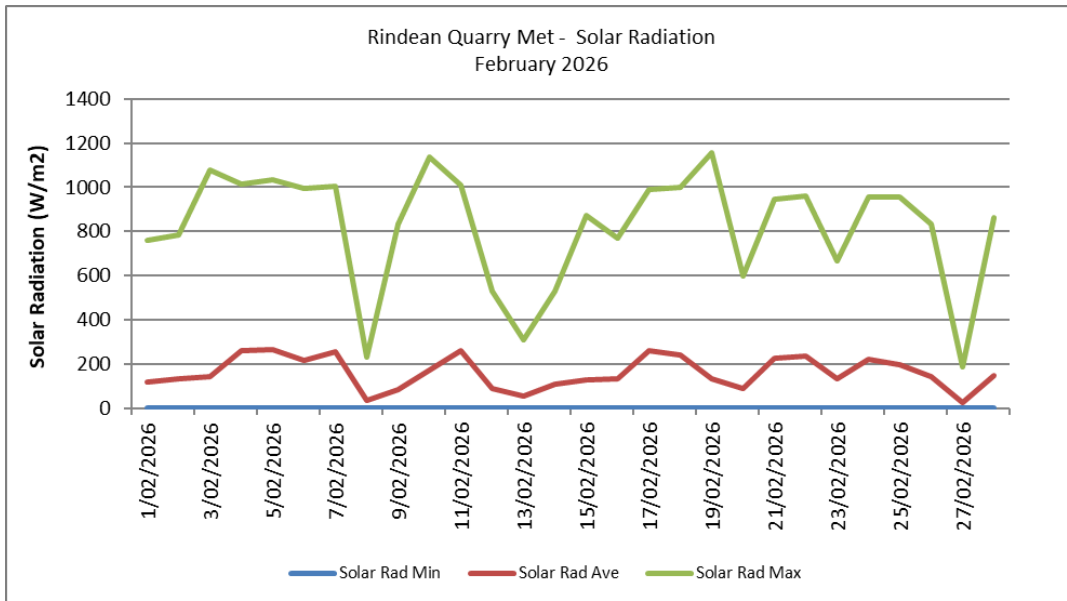


Figure 9-10: Daily (minimum, average, maximum) Solar Radiation and Sigma Theta